

**CAUTION:**  
LOADING VALVES SHOULD ALWAYS BE USED IN CONJUNCTION WITH A SECONDARY SHUTOFF SYSTEM SUCH AS A METER WITH PRESET VALVE. A RELIEF VALVE MUST BE PROVIDED FOR THE TRAPPED PRODUCT BETWEEN THE SECONDARY SHUTOFF AND THE LOADING VALVE.

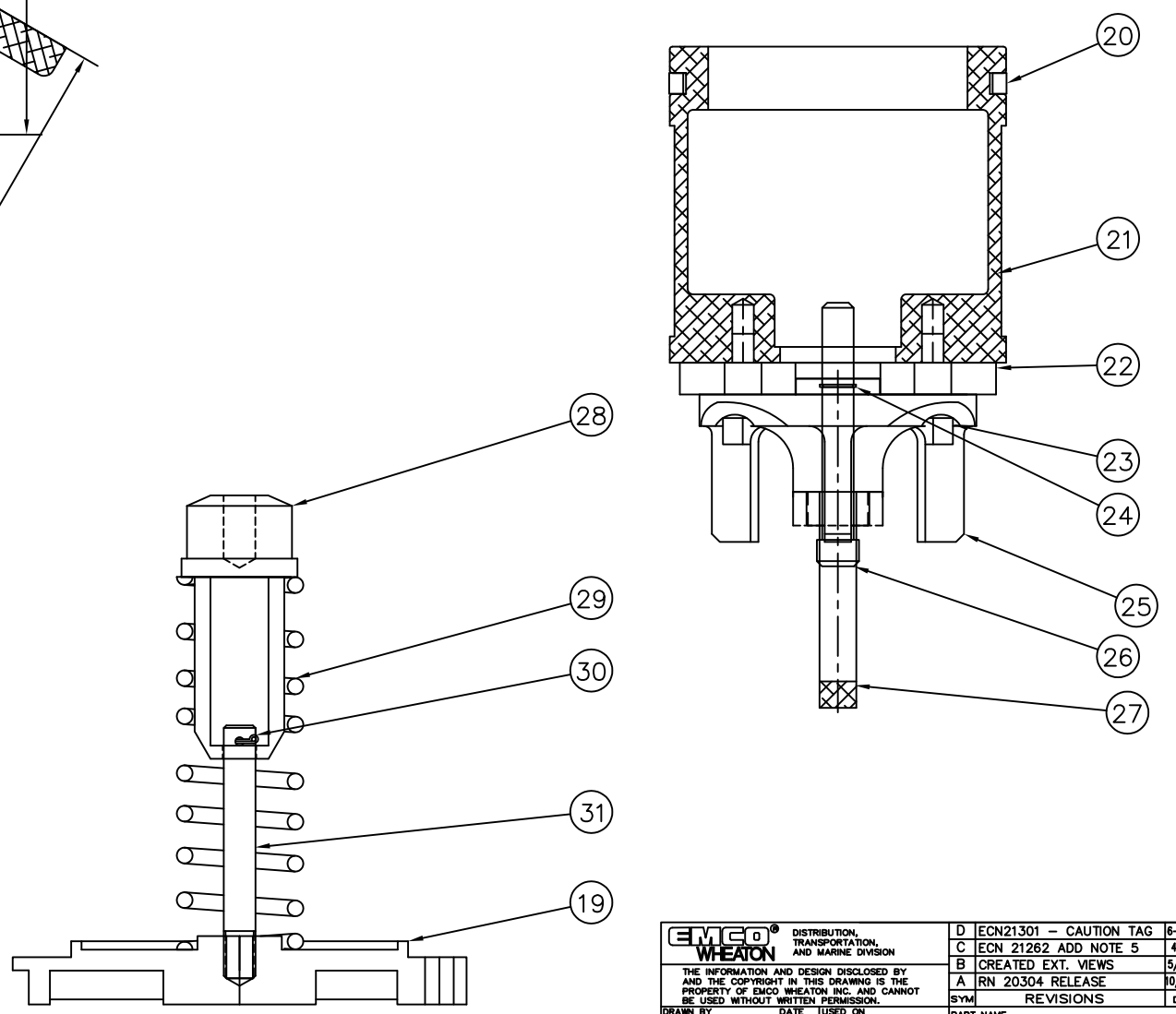
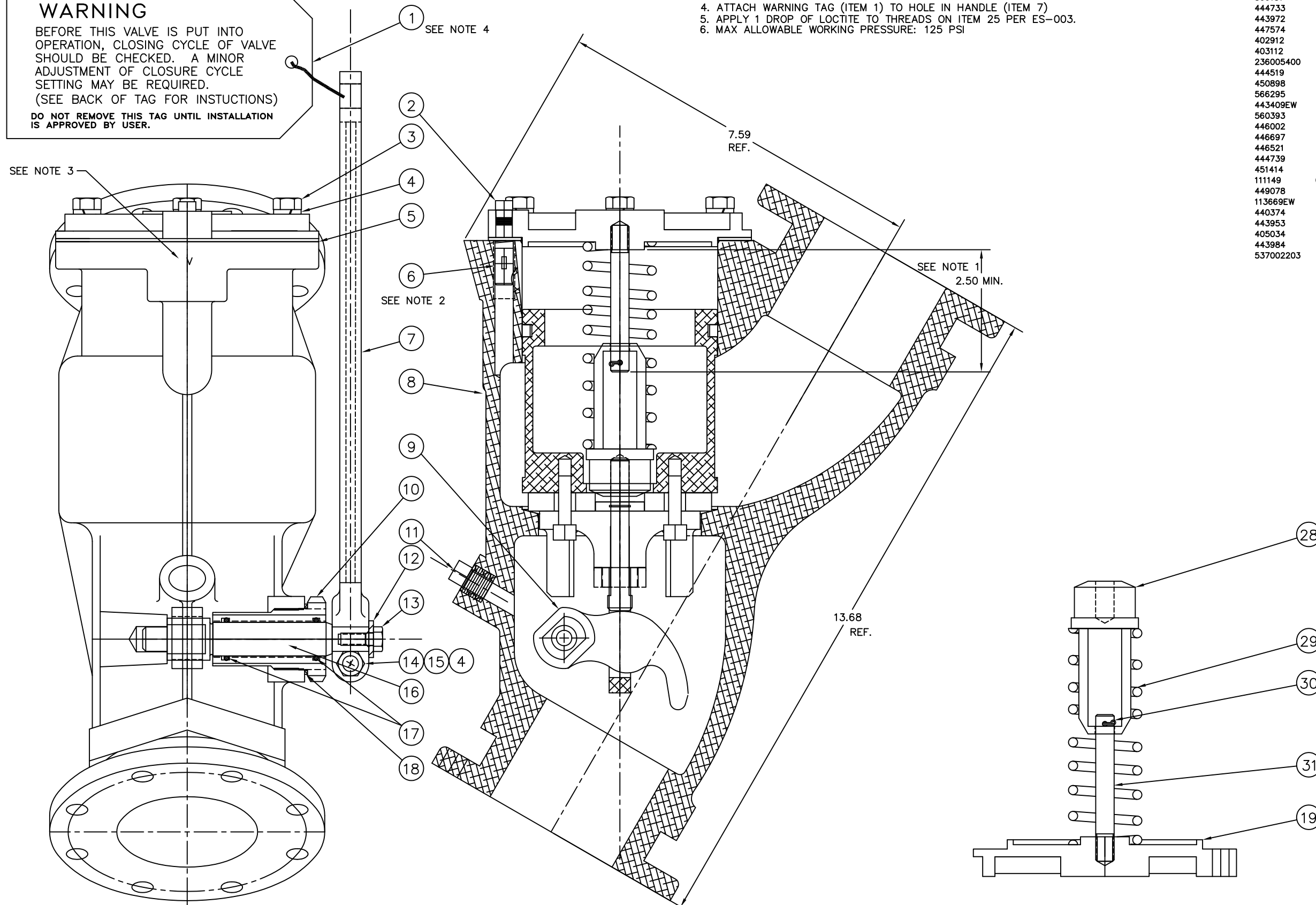
**WARNING**

BEFORE THIS VALVE IS PUT INTO OPERATION, CLOSING CYCLE OF VALVE SHOULD BE CHECKED. A MINOR ADJUSTMENT OF CLOSURE CYCLE SETTING MAY BE REQUIRED. (SEE BACK OF TAG FOR INSTUCTIONS)  
DO NOT REMOVE THIS TAG UNTIL INSTALLATION IS APPROVED BY USER.

- NOTE:**
- ASSEMBLE ITEMS 19 & 31 WITH LOCTITE 271 AT ASSEMBLY THIS DIMENSION IS 2.50 MIN.
  - ADJUST FLOW RATE ADJUSTMENT SCREW (ITEM 6) PER TP-034.
  - AT ASSEMBLY STAMP SEAL IDENTIFICATION LETTER "V"
  - ATTACH WARNING TAG (ITEM 1) TO HOLE IN HANDLE (ITEM 7)
  - APPLY 1 DROP OF LOCTITE TO THREADS ON ITEM 25 PER ES-003.
  - MAX ALLOWABLE WORKING PRESSURE: 125 PSI

Today: 10/24/95  
Parent: E0471-042 BOM Id: 001 BRL: A

Part Number	Item Description	Material	Quantity
564804	001 TAG, WARNING	CARDBOARD	1
403060	002 1/8 NPT PIPE PLUG	STL/CAD	1
452345	003 SCRW 5/16-18X1.25 HX CAP	STL/ZINC	6
470034	004 WASHER, LOCK	STL/ZINC	7
444986	005 BONNET GASKET	FIBER	1
454312	006 SCRW 3/8-16X0.75 SET HX	SST	1
443224	007 LOADING VALVE WRENCH	IRON	1
566137	008 3" LOADING VALVE BODY FLNG	ALUM	1
444733	009 3" CAM,LOADING VALVE	ALUM/BRNZ	1
443972	010 PACKING NUT FOR LOAD	BRASS	1
447574	011 PLUG 3/8 NPT SQ HD	STEEL	1
402912	012 WASHER, FLAT	BRASS	1
403112	013 SCRW 1/4-20X0.5 HX HD	STL/ZINC	1
236005400	014 NUT, HEX 5/16-18	STL/CAD	1
444519	015 SCRW 5/16-18X1.75 HX CAP	STL	1
450898	016 CAM OPERATING STEM 600/601	SST	1
566295	017 O-RING #115	VITON	2
443409EW	018 GASKET	BLACK FIBER	1
560393	019 3" LOADING VALVE BONNET	ALUM	1
446002	020 601 VALVE PISTON RING	TEFLON	1
446697	021 3"PLUNGER FOR E471 VALVE	ALUM	1
446521	022 PLUNGER DISC	VITON	1
444739	023 SCRW 5/16-18X1.0 HS SKT	STL/CAD	2
451414	024 RETAINING RING	SST	1
111149	025 3"PLUNGER GUIDE	COM.ALLOY 2570	1
449078	026 STEM GUIDE	SST	1
113669EW	027 PULL DOWN YOKE	BRASS	1
440374	028 PILOT VALVE	ALUM	1
443953	029 SPRING	SST	1
405034	030 COTTER PIN	SST	1
443984	031 PILOT VALVE GUIDE STEM	SST	1
537002203	032 CAUTION TAG	PAPER	1



		DISTRIBUTION, TRANSPORTATION, AND MARINE DIVISION	
THE INFORMATION AND DESIGN DISCLOSED BY AND THE COPYRIGHT IN THIS DRAWING IS THE PROPERTY OF EMCO WHEATON INC. AND CANNOT BE USED WITHOUT WRITTEN PERMISSION.			
DRAWN BY	DATE	USED ON	PART NAME
MGS	10/24/95	E0471	3" FLANGED LOADING VALVE
CHECKED BY	DATE	PROJECT NUMBER	SINGLE EXTERNAL ADJUSTMENT
		EP3388	
APPROVED BY	DATE	SCALE	WEIGHT
		FULL	15.45 #
MATERIAL	CASTING NUMBER	SIZE	DRAWING NUMBER
SEE BOM	-	D	E0471-042
		REV.	D